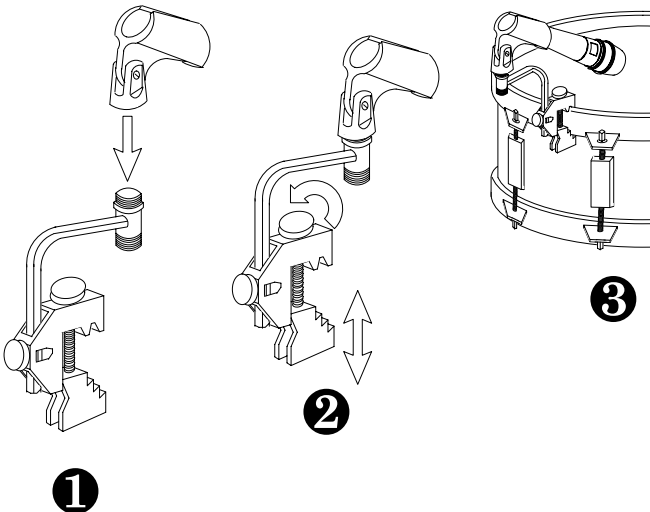


### MODEL A56D MICROPHONE DRUM MOUNT

#### GENERAL

The Shure A56D is designed specifically for mounting microphones on a drum by providing a clamp for fastening a stand adapter with a  $\frac{5}{8}$ -in., 27-thread. The A56D provides an L-adaptor extension that curves at a 90° angle for optimum microphone placement. The clamp is designed to fit drum rims measuring from  $\frac{1}{2}$ -in. (12.7 mm) to  $2\frac{1}{4}$ -in. (57.2 mm) in height, or on cymbal stands measuring from  $\frac{3}{8}$ -in. (9.5 mm) to  $1\frac{1}{8}$ -in. (28.6 mm) in diameter.

#### DRUM RIM MOUNTING



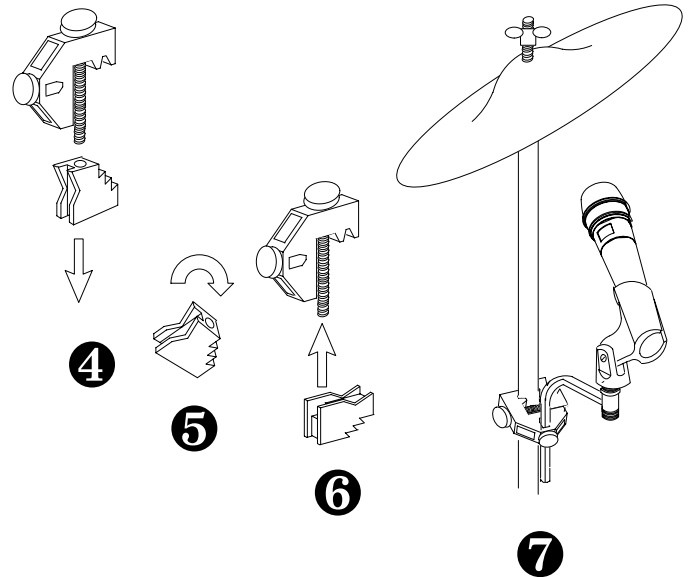
1. Fasten a microphone stand adapter to the L-adaptor (1). Position the stand adapter as desired.
2. Adjust the positioning ring until it is flush against the bottom of the stand adapter to hold it firmly in place.

**NOTE:** For microphones with built-in stand adapters, such as the Shure Model Beta 56, no other stand adapter is required. Simply fasten the built-in stand adapter of the microphone directly onto the threads of the L-adaptor.

3. Loosen the top thumbscrew until the rim notches fit over the drum rim (2).
4. Place the clamp along the rim where desired and tighten the top thumbscrew to secure the clamp to the drum rim (3).
5. Loosen the side thumbscrew on the clamp, adjust the L-adaptor positioning as desired, then tighten the side thumbscrew.
6. Insert a microphone in the stand adapter and position it as desired.

**NOTE:** To minimize potential noise or damage from drum sticks, position the microphone outside the drummer's range of stick movement.

#### CYMBAL STAND MOUNTING



1. Loosen the side thumbscrew on the clamp and remove the L-adaptor from the slot in the clamp.
2. Loosen the top thumbscrew until the lower clamp section is completely removed (4).
3. Rotate the lower clamp 90° so that the rim notches point downward and the wide notch points upward (5 and 6).
4. Insert the threads of the top thumbscrew into the hole toward the back of the lower clamp section (6).
5. Rotate the thumbscrew to tighten the clamp (6).
6. Place the clamp along the cymbal stand where desired.
7. Tighten the top thumbscrew to secure the clamp to the cymbal stand (7).
8. Insert the L-adaptor into either the vertical or horizontal slot in the clamp as desired for positioning.
9. Tighten the side thumbscrew to secure the L-adaptor.
10. Fasten a microphone stand adapter to the L-adaptor (1). Position the stand adapter as desired.
11. Adjust the positioning ring until it is flush against the bottom of the stand adapter.
12. Insert a microphone into the stand adapter and position as desired.

**NOTE:** To minimize potential noise or damage from drum sticks, position the microphone outside the drummer's range of stick movement.

# SHURE®

SHURE Incorporated Web Address: <http://www.shure.com>  
222 Hartrey Avenue, Evanston, IL 60202-3696, U.S.A.  
Phone: 847-866-2200 Fax: 847-866-2279  
In Europe, Phone: 49-7131-72140 Fax: 49-7131-721414  
In Asia, Phone: 852-2893-4290 Fax: 852-2893-4055  
Elsewhere, Phone: 847-866-2200 Fax: 847-866-2585